



403 000 €

Buying apartment

4 rooms

Surface : 86 m²

Surface of the living : 27 m²

Year of construction : 1974

Exposition : Traversant Ouest et Est

View : Dégagée parc espaces verts

Hot water : Collective

Inner condition : GOOD

Standing : GOOD

Features :

Ascenseur, Gardien, Near beaches and shops, Secured residence, Quiet residential, Parc avec Tennis, Jeux de boules, Aire de jeux, Store solaire, Lumineux, Cellier, Buanderie, Many closets, Many parking lots

3 bedrooms

3 terraces

1 shower

1 WC

1 parking

1 cellar

Document non contractuel

30/11/2020 - Prix T.T.C



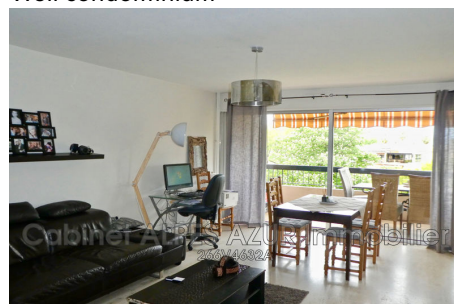
Apartment 12463 Villeneuve-Loubet

BEAUTIFUL LOCATION on the sought after and residential area of Bouches du Loup VILLENEUVE LOUBET near the beaches of shops and transport, our agency offers you to discover in EXCLUSIVITY this beautiful 3 rooms upstairs in a residence of quality and secure with guardian taking advantage of a pleasant park with trees and greenery with tennis, it has a double exposure through a beautiful southern sunshine and a pleasant green view of the green areas, comfortable interiors are bright and open with large windows on 2 terraces, distribution day night is functional, a large living room with dining area connecting a kitchen with adjoining pantry, 2 bedrooms with parquet floors, one with closet, a bathroom and separate toilet, many secure parking and a cellar, A VISIT FAST, 325.000 euros, Fees charged to the Seller, Property subject to the statutes of the condominium, Cabinet ALPES AZUR Real Estate www.alpesazur.com The specialist sales apartments 04.93.20.10.00.

Fees and charges :

Annual current expenses 3 840 €

Well condominium



Cabinet ALPES AZUR Immobilier - 4 avenue de Nice - 06800 CAGNES sur MER

Tél. 04 93 20 10 00 - Fax 04 93 22 48 70 - info@alpesazur.com

Carte professionnelle CPI n° 0605 2016 000 006 924 CCI NICE COTE D'AZUR - RCS ANTIBES B 339 591 190

SIRET 339 591 190 00014 - Sarl au Capital de 39.636 € - Code NAF 6831Z -Garanties financières MONTE PASCHI BANQUE

Assurance RCP AXA FRANCE IARD, 313 Terrasse de l'Arche, 92000 NANTERRE

